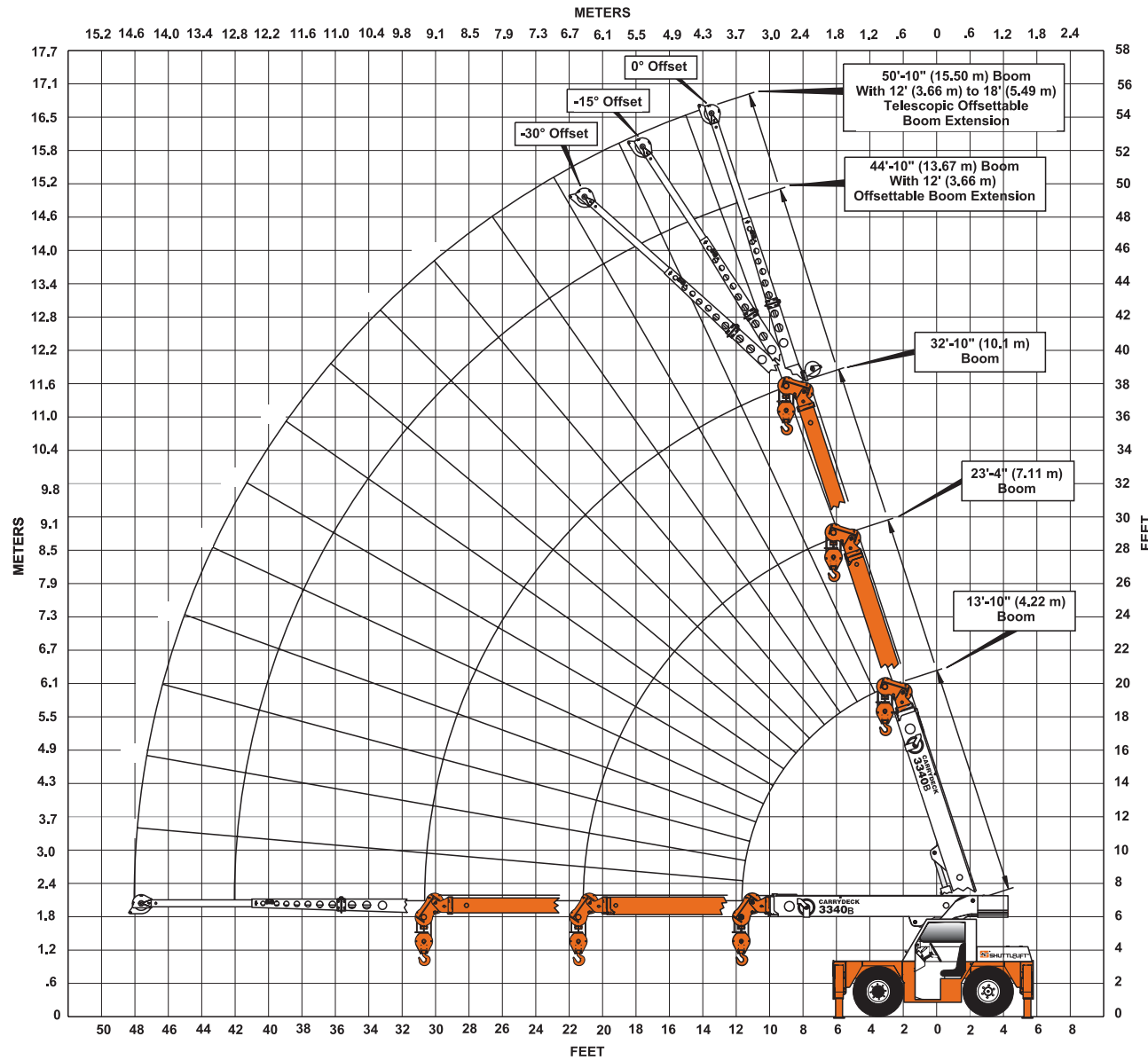


# Range Chart



3340B 3-SECTION BOOM WITH 12' (3.66 M) TO 18' (5.49 M) OFFSETTABLE BOOM EXTENSION

RATING REDUCTIONS FOR INSTALLED LOAD HANDLING DEVICES		
DEVICE	FROM MAIN BOOM	FROM BOOM EXTENSION
MAIN BLOCK	140 LB (64 kg)	N/A
HOOK & BALL	100 LB (45.4 kg)	100 (45.4 kg)
EXTENSION - STOWED	NO DEDUCTION	N/A
EXTENSION - DEPLOYED	450 LB (204 kg)	NO REDUCTION



Manitowoc Crane Group - Americas  
 Shady Grove, Pennsylvania Facility  
 Tel: [Int + 001] 717 597 8121  
 Fax: [Int + 001] 717 597 4062  
 www.manitowoccrane.com

Constant improvement and engineering progress make it necessary that we reserve the right to make specification, equipment, and price changes without notice. Illustrations shown may include optional equipment and accessories, and may not include all standard equipment.

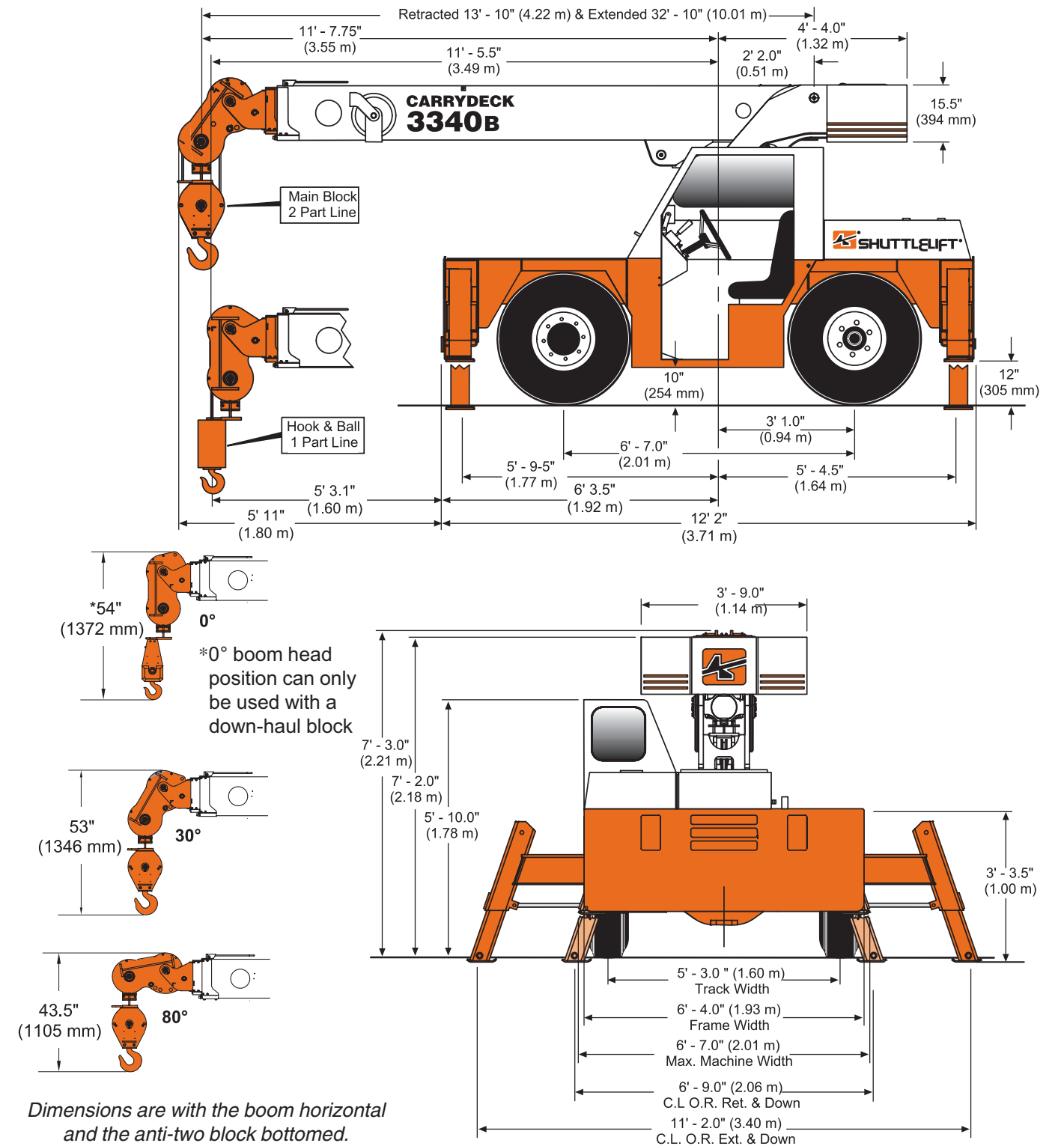


## Carrydeck® Industrial Cranes

MODEL

# 3340B

## 10.5 TON (9525 KG)



Dimensions are with the boom horizontal and the anti-two block bottomed.

