

Rated Load Capacities (continued)

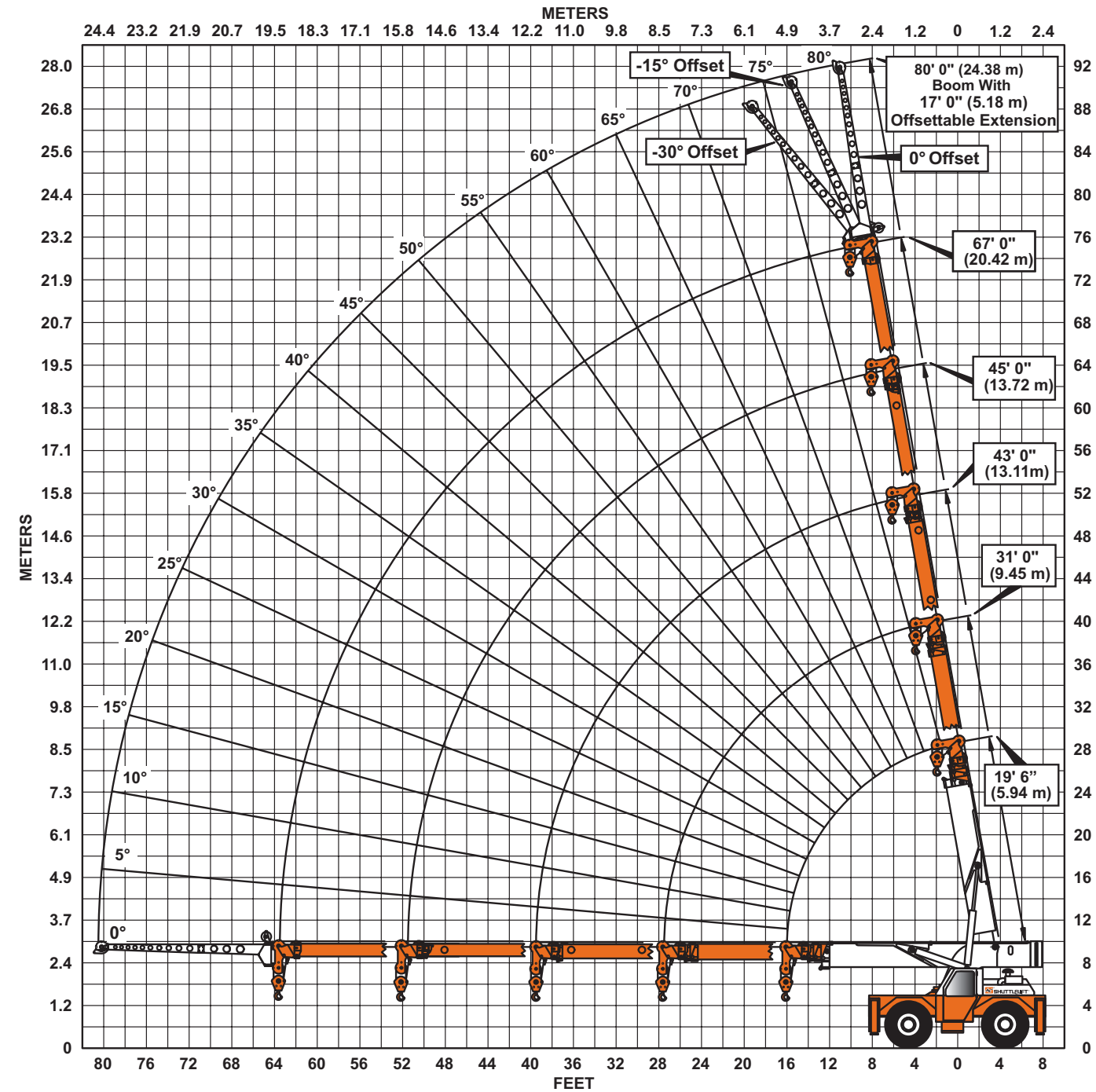
| MAIN BOOM ON RUBBER | | | | | | | | |
|---------------------|-----------------------|----------------------|-----------------|-----------------------|----------------------|-----------------|-----------------------|----------------------|
| Any Boom Length | | | Any Boom Length | | | Any Boom Length | | |
| Radius ft (m) | Front Rating lbs (kg) | 360° Rating lbs (kg) | Radius ft (m) | Front Rating lbs (kg) | 360° Rating lbs (kg) | Radius ft (m) | Front Rating lbs (kg) | 360° Rating lbs (kg) |
| 6 | 30000 | 21000 | 26 | 4900 | 2350 | 46 | 1650 | 450 |
| (1.80) | (13610) | (9530) | (7.92) | (2220) | (1040) | (14.02) | (750) | (200) |
| 8 | 28000 | 17900 | 28 | 4200 | 2100 | 48 | 1400 | 350 |
| (2.44) | (12700) | (8120) | (8.53) | (1910) | (950) | (14.63) | (640) | (160) |
| 10 | 25000 | 15000 | 30 | 3700 | 1800 | 50 | 1300 | 250 |
| (3.05) | (11340) | (6800) | (9.14) | (1680) | (820) | (15.24) | (590) | (110) |
| 12 | 19600 | 12400 | 32 | 3300 | 1550 | 52 | 1150 | 200 |
| (3.66) | (8890) | (5620) | (9.75) | (1500) | (700) | (15.85) | (520) | (90) |
| 14 | 15500 | 9500 | 34 | 3000 | 1300 | 54 | 1050 | 150 |
| (4.27) | (7030) | (4310) | (10.36) | (1360) | (590) | (16.46) | (480) | (70) |
| 16 | 12400 | 7400 | 36 | 2700 | 1100 | 56 | 950 | 75 |
| (4.88) | (5620) | (3360) | (10.97) | (1220) | (500) | (17.07) | (430) | (30) |
| 18 | 9900 | 6000 | 38 | 2500 | 950 | 58 | 875 | 25 |
| (5.49) | (4490) | (2720) | (11.58) | (1130) | (430) | (17.68) | (495) | (10) |
| 20 | 8100 | 4600 | 40 | 2200 | 800 | 60 | 800 | - |
| (6.10) | (3670) | (2090) | (12.19) | (1000) | (360) | (18.29) | (360) | - |
| 22 | 6800 | 3700 | 42 | 2000 | 675 | 62 | 700 | - |
| (6.71) | (3080) | (1680) | (12.80) | (910) | (310) | (18.90) | (320) | - |
| 24 | 5700 | 3000 | 44 | 1800 | 550 | 63.5 | 600 | - |
| (7.32) | (2590) | (1360) | (13.41) | (820) | (250) | (19.36) | (270) | - |

| 17 FT JIB CAPACITIES ON EXTENDED OUTRIGGERS | | | | | |
|---|--------------------------------|--------------------------------|--------------------------------|--------------------------------|-----------------|
| Main Boom Angle (deg) | Jib Offset Angle | | | | |
| | 0 deg | | 15 deg | | 30 deg |
| | To 55.0 ft (16.76 m) Main Boom | To 67.0 ft (20.42 m) Main Boom | To 55.0 ft (16.76 m) Main Boom | To 67.0 ft (20.42 m) Main Boom | Any Boom Length |
| 80 | - | - | 5000 (2270) | 5000 (2270) | 3500 (1590) |
| 75 | 7500 (3400) | - | 4400 (2000) | 4400 (2000) | 3100 (1410) |
| 70 | 6100 (2770) | - | 3900 (1770) | 3900 (1770) | 2800 (1270) |
| 65 | 5000 (2270) | 4600 (2090) | 3500 (1590) | 3500 (1590) | 2550 (1160) |
| 60 | 4300 (1950) | 3800 (1720) | 3150 (1430) | 3150 (1430) | 2350 (1065) |
| 55 | 3800 (1720) | 3300 (1500) | 2850 (1290) | 2850 (1290) | 2200 (1000) |
| 50 | 3400 (1540) | 2900 (1320) | 2600 (1180) | 2600 (1180) | 2100 (950) |
| 45 | 3050 (1380) | 2600 (1180) | 2400 (1090) | 2400 (1090) | 2000 (910) |
| 40 | 2800 (1270) | 2400 (1090) | 2250 (1020) | 2250 (1020) | 1950 (880) |
| 35 | 2600 (1180) | 2150 (980) | 2150 (975) | 2050 (930) | 1900 (860) |
| 30 | 2400 (1090) | 1930 (880) | 2080 (940) | 1850 (840) | 1830 (830) |
| 25 | 2300 (1040) | 1750 (790) | 2050 (930) | 1720 (780) | - |
| 20 | 2200 (1000) | 1600 (730) | 2000 (910) | 1590 (720) | - |
| 15 | 2100 (950) | 1500 (680) | 1950 (880) | 1520 (690) | - |
| 10 | 2050 (930) | 1460 (660) | - | - | - |
| 5 | 2020 (920) | 1450 (655) | - | - | - |
| 0 | 2000 (910) | 1440 (650) | - | - | - |

| RATING REDUCTIONS FOR INSTALLED LOAD HANDLING DEVICES | | |
|---|------------------|---------------------|
| DEVICE | FROM MAIN BOOM | FROM BOOM EXTENSION |
| MAIN BLOCK | 400 LB (181 kg) | NOT APPLICABLE |
| HOOK & BALL | 100 LB (45.4 kg) | 100 (45.4 kg) |
| EXTENSION - STOWED | NO DEDUCTION | NOT APPLICABLE |
| EXTENSION - DEPLOYED | 500 LB (227 kg) | NO REDUCTION |

HOIST ROPE: 5/8" diameter (16 mm) 6 x 19 EIPS IWRC BRIGHT
 Minimum required breaking strength = 38,500 lb (17 460 kg)
 Maximum permissible single line pull = 11,000 lb (4990 kg)

Range Chart



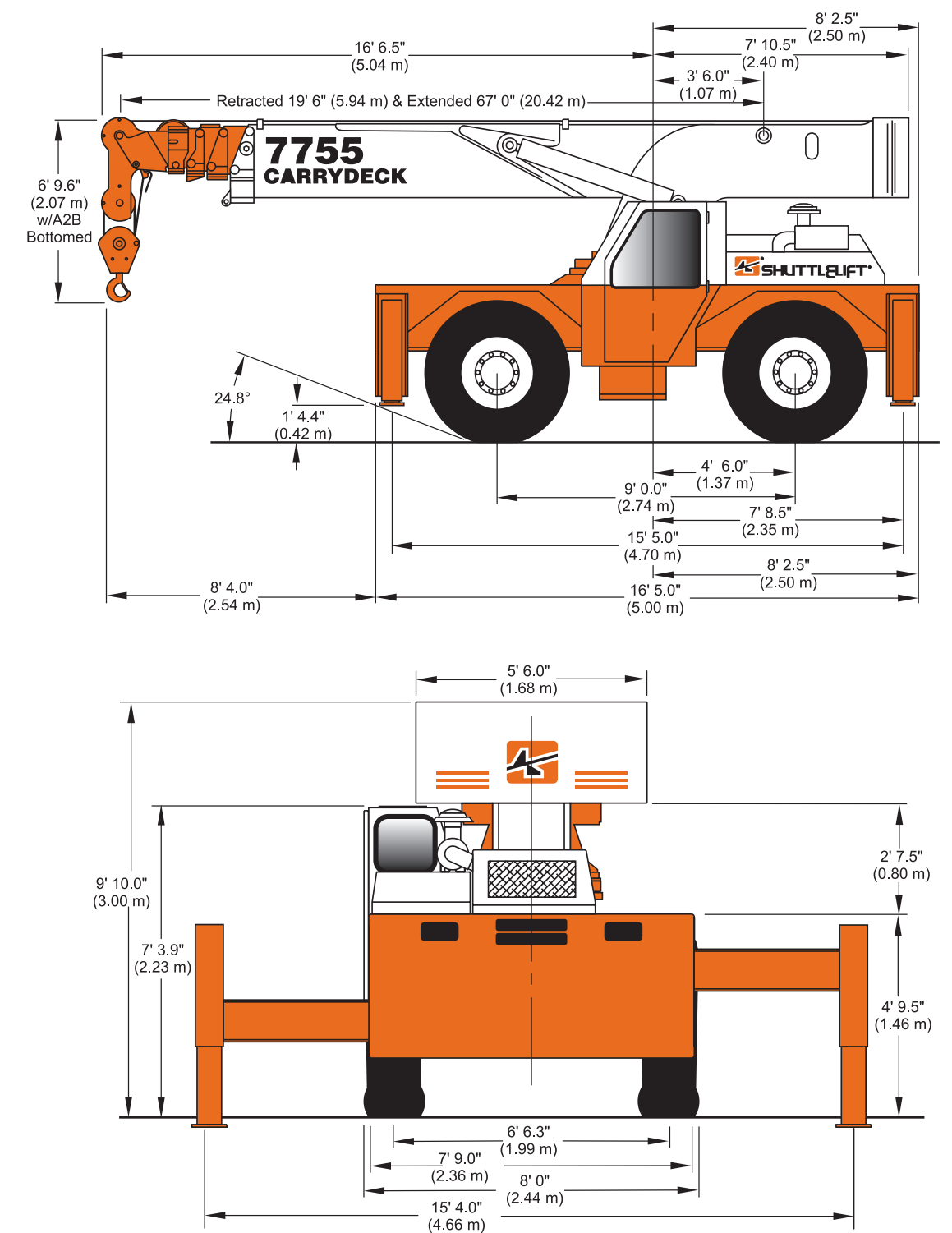
7755 5-SECTION 80' (24.38 M) BOOM PLUS 17' (5.18 M) OFFSETTABLE EXTENSION



MODEL

Carrydeck®
Industrial Cranes

7755
22 TON (19 960 KG)



Manitowoc Crane Group - Americas
 Shady Grove, Pennsylvania Facility
 Tel: [Int + 001] 717 597 8121
 Fax: [Int + 001] 717 597 4062
 www.manitowoccrane.com

Constant improvement and engineering progress make it necessary that we reserve the right to make specification, equipment, and price changes without notice. Illustrations shown may include optional equipment and accessories, and may not include all standard equipment.

