



BT 70100
35 US t Lifting Capacity
Boom Truck Cranes
Datasheet
Imperial

BT 70100



Features: BT 70100

- ▶ 35 US t @ 5 ft capacity at rated distance from center of rotation
- ▶ 100 ft maximum boom length
- ▶ 110 ft maximum sheave height
- ▶ 30.5/55 ft optional jib
- ▶ 163 ft maximum tip height with 55 ft jib
- ▶ Behind cab mounting with dual operator console
- ▶ Electronic rated capacity indicator
- ▶ Quick reeving boom head

WORKS FOR YOU.™

Key

..... 3

Dimensions

Crane Dimensions 4, 5
Area of Operation 5
Mounting Specifications 5
Range Diagram 6

Load charts

Boom Load Charts 7, 8, 9
Jib, Retracted 7
Jib, Extended 7

Technical description

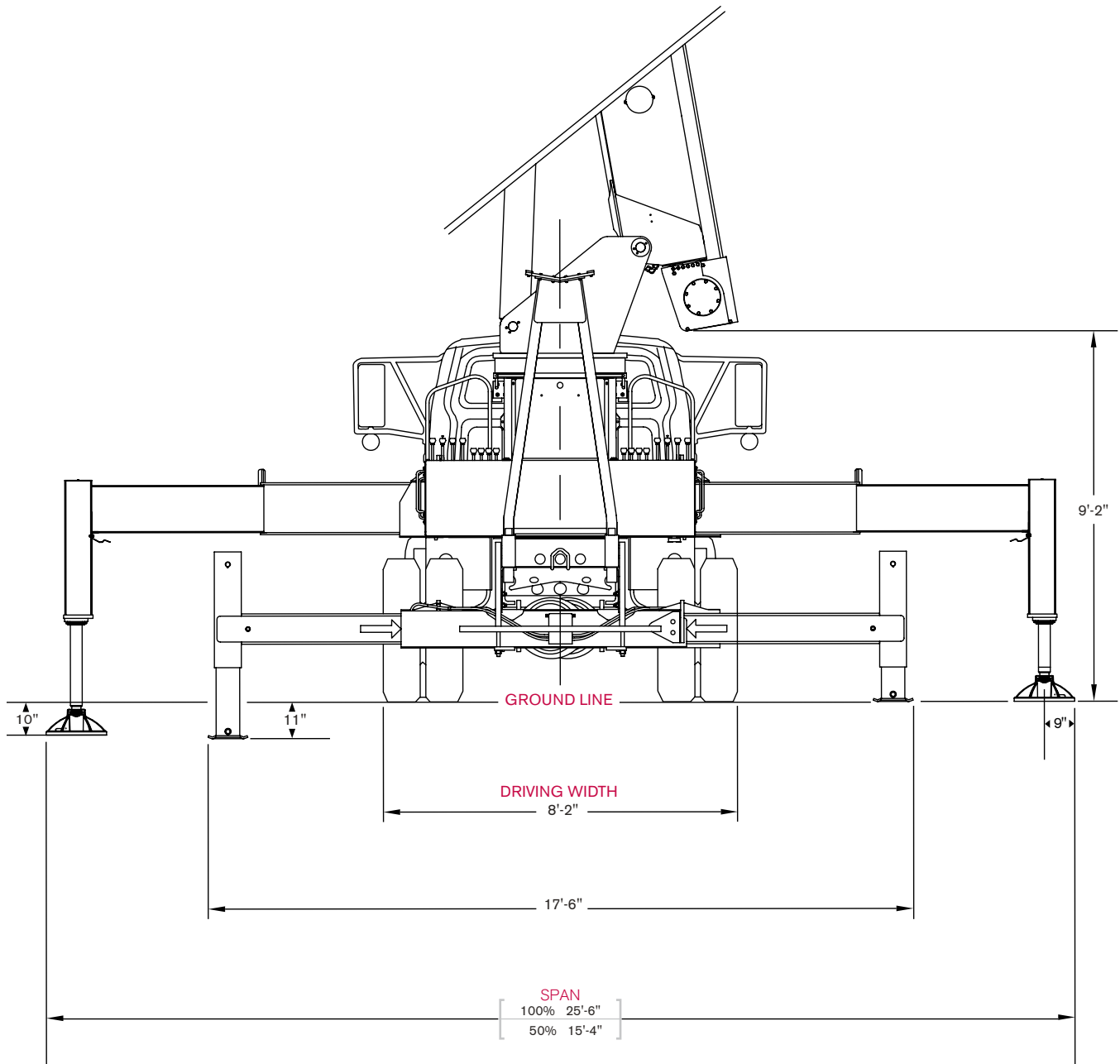
Boom, Jib and Rotation 10
Operator Controls and Operator Aid 10, 11
Understructure 11
Optional Features 11

	Main boom		Main Hoist
	Boom length		Hoist line speed
	Tip height		Part line
	Telescoping mode		Operator aid
	Boom angle		Controls
	Working radius		Hydraulics
	Boom with jib		Working temperature
	Boom head		Outriggers
	Hook block		Working speeds
	Hook to head sheave pin		Rope – Standard / Optional
	Rotation / Allowable rotation range		Rope diameter
	Boom angle		Rope length
	Boom over the rear		Line pull

DIMENSIONS

BT 70100

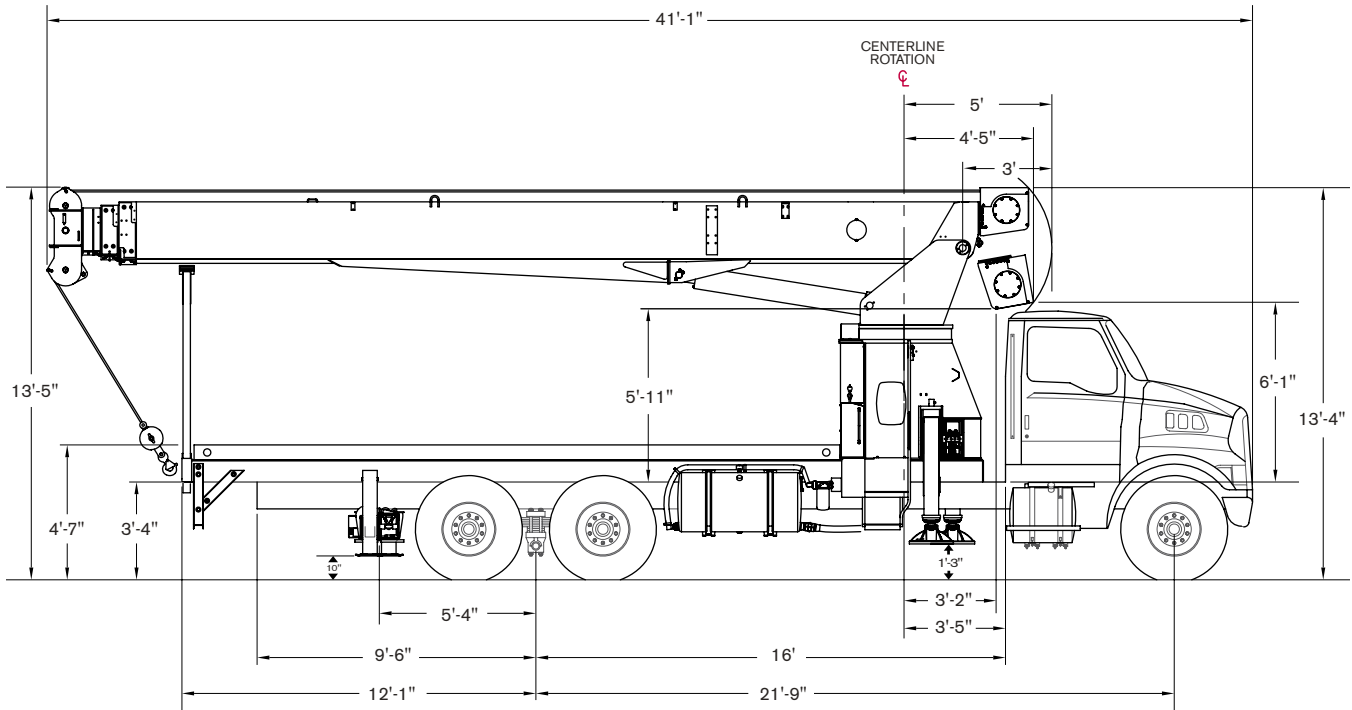
Crane Dimensions



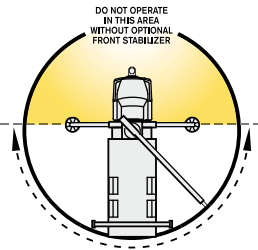
DIMENSIONS

BT 70100

Crane Dimensions



Area of Operation



Mounting Specifications

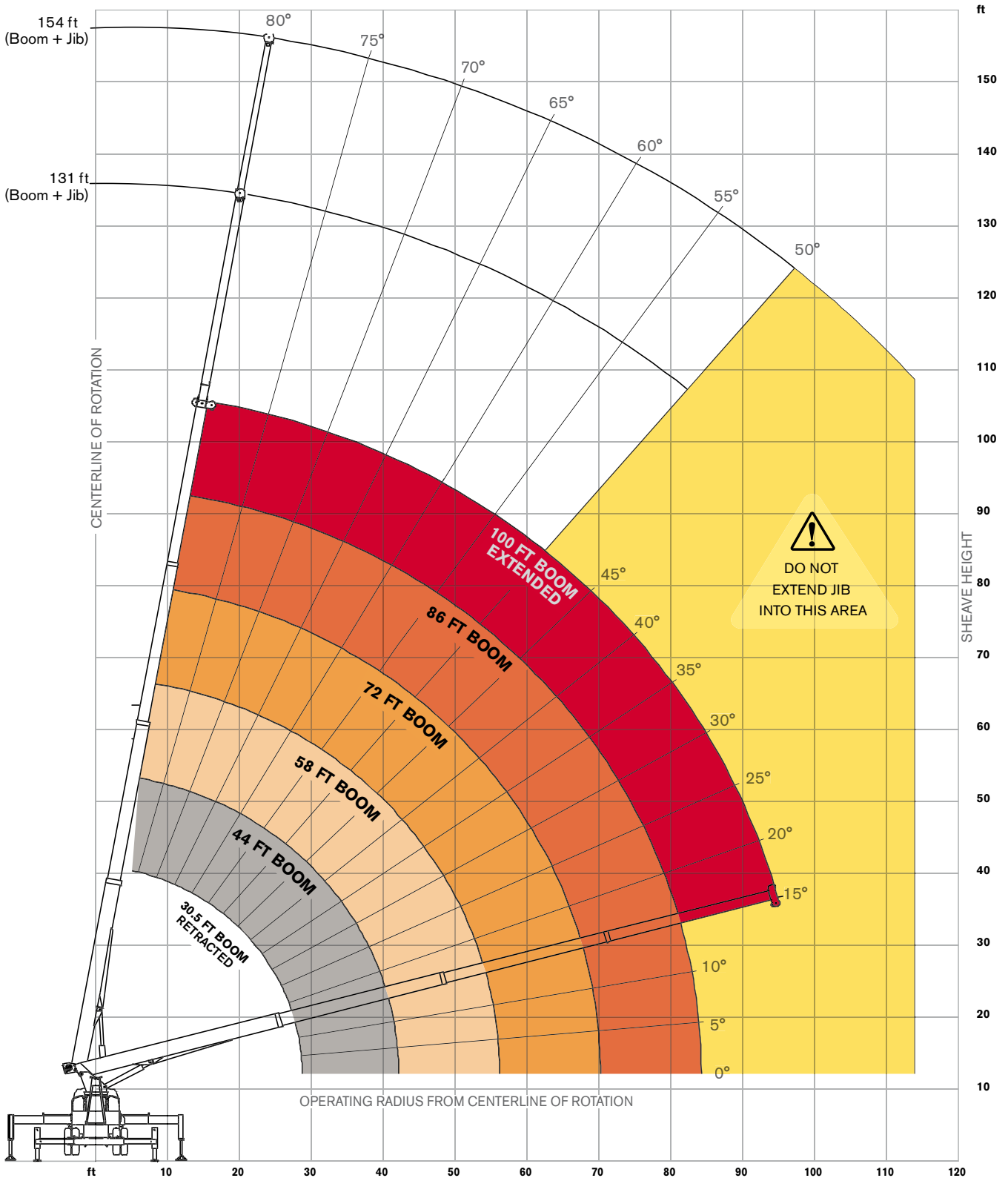
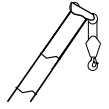
Chassis Recommendation

Gross Vehicle Weight Rating	54,000 lb
Front Axle Weight Rating	20,000 lb
Rear Axle Weight Rating	34,000 lb
Wheelbase	261 +/- 4 in
Cab to Axle	192 +/- 4 in
Afterframe	114 +/- 4 in
RBM per Frame Rail	3,300,000 lb/in
Frame Height (Unloaded)	40 in
Exhaust	Vertical Right Side

RANGE DIAGRAM

BT 70100

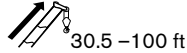
Outriggers Fully Extended (100%)



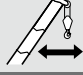
BOOM LOAD CHARTS

BT 70100

Outriggers Fully Extended (100%)





Standard ASME B30.5

	Boom Length						
	30.5	44	58	72	86	100	
ft	lb	lb	lb	lb	lb	lb	ft
5	70,000						5
8	54,900						8
10	46,300	31,300					10
12	40,000	31,700	31,100				12
15	33,200	31,600	30,500	27,600			15
20	24,400	24,500	23,600	21,200	19,000		20
25	18,300	19,100	19,100	17,200	15,300	12,100	25
30		15,000	15,400	14,400	12,900	10,500	30
35		11,900	12,300	12,000	11,100	9,100	35
40		9,000	9,400	9,400	9,500	7,000	40
45			7,400	7,600	7,700	6,000	45
50			5,900	6,100	6,200	5,100	50
55			4,600	5,000	5,100	4,500	55
60				4,000	4,200	3,900	60
65				3,200	3,400	3,400	65
70					2,800	2,900	70
75					2,200	2,400	75
80					1,700	1,900	80
85						1,500	85
90						1,100	90
95						800	95

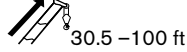
Boom at 0°





Standard ASME B30.5

	Boom Length						
	30.5	44	58	72	86	100	
°	lb	lb	lb	lb	lb	lb	°
0	8,700	4,900	2,800	1,600	700	-	0

With Jib, Retracted and Extended



Standard ASME B30.5

	Jib Capacities for All Boom Lengths								
	80°	78°	75°	70°	65°	60°	55°	50°	
ft	lb	lb	lb	lb	lb	lb	lb	lb	ft
30.5	6,450	6,000	5,300	4,000	3,300	2,300	1,400	800	30.5
55	3,500	3,500	3,500	2,900	2,300	1,700	1,050	700	55

Notes to lifting capacity

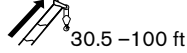
Lifting capacities do not exceed 85% of tipping load. Weight of hook blocks and slings is part of the load, and is to be deducted from the capacity ratings. Consult operation manual for further details.

Note: Data published herein is intended as a guide only and shall not be construed to warrant applicability for lifting purposes. Crane operation is subject to the computer charts and operation manual both supplied with the crane.

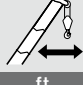
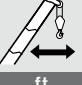
BOOM LOAD CHARTS

BT 70100

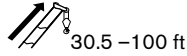
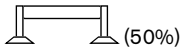
Outriggers Extended Mid-Position (50%)





Standard ASME B30.5

	Boom Length						
	30.5	44	58	72	86	100	
ft	lb	lb	lb	lb	lb	lb	ft
5	70,000						5
8	47,000						8
10	42,100	31,300					10
12	37,300	31,700	31,100				12
15	31,600	31,600	30,500	27,600			15
20	16,900	11,100	18,000	18,600	18,300		20
25	10,100	7,400	11,400	11,600	11,700	11,800	25
30		5,000	7,700	7,900	8,000	8,100	30
35		3,300	5,400	5,600	5,700	5,800	35
40			3,800	4,000	4,200	4,200	40
45			2,600	2,900	3,000	3,100	45
50			1,700	2,000	2,100	2,200	50
55			900	1,200	1,400	1,500	55
60						900	60

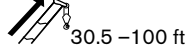
Boom at 0°





Standard ASME B30.5

	Boom Length						
	30.5	44	58	72	86	100	
°	lb	lb	lb	lb	lb	lb	°
0	7,100	2,700	-	-	-	-	0

With Jib, Retracted and Extended



Standard ASME B30.5

	Jib Capacities for All Boom Lengths					
	80°	78°	75°	70°	65°	
ft	lb	lb	lb	lb	lb	ft
30.5	6,450	6,000	5,300	3,175	1,650	30.5
55	3,500	3,500	3,500	2,800	1,275	55

Notes to lifting capacity

Lifting capacities do not exceed 85% of tipping load. Weight of hook blocks and slings is part of the load, and is to be deducted from the capacity ratings. Consult operation manual for further details.

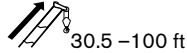
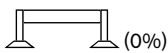
Note: Data published herein is intended as a guide only and shall not be construed to warrant applicability for lifting purposes. Crane operation is subject to the computer charts and operation manual both supplied with the crane.



BOOM LOAD CHARTS

BT 70100

Outriggers Fully Retracted (0%)



Standard ASME B30.5

ft	Boom Length						ft
	30.5 lb	44 lb	58 lb	72 lb	86 lb	100 lb	
5	43,700						5
8	25,400						8
10	16,100	16,800					10
12	11,200	11,900	12,200				12
15	7,000	7,800	8,100	8,200			15
20	3,300	4,200	4,500	4,700	4,800		20
25	1,300	2,200	2,600	2,800	2,900	3,000	25
30		1,000	1,400	1,600	1,800	1,800	30
35					900	1,000	35

Notes to lifting capacity



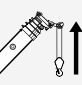

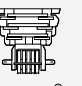


Lifting capacities do not exceed 75% of tipping load. Weight of hook blocks and slings is part of the load, and is to be deducted from the capacity ratings. Consult operation manual for further details.

Note: Data published herein is intended as a guide only and shall not be construed to warrant applicability for lifting purposes. Crane operation is subject to the computer charts and operation manual both supplied with the crane.


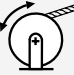
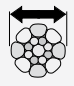


TECHNICAL DESCRIPTION

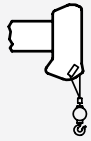
BT 70100

Boom, Jib and Rotation

	Full power fully synchronized telescopic keel boom	4 sections
	Boom length	30.5–100 ft
	Boom maximum sheave height	110 ft
	Boom elevation angle range (min / max)	-8° / 82°
	Boom up/down time	60 / 41 seconds
	Boom extension/retraction time	108 / 50 seconds
	Boom head	Quick reeving
	Maximum tip height: With optional jib 30.5–55 ft	163 ft
	370° non-continuous rotation	

Operator Controls and Operator Aid

	Hoist line pull	12,900 lb
	Hoist line speed (3rd layer)	196 ft/min
	Rope diameter	5/8 in
	Breaking strength	45,400 lb
	Permissible line pull	12,900 lb
	Overhaul ball	7 US t
	1 Sheave block	20 US t
	2 Sheave block	30 US t
	3 Sheave block	40 US t



1 part line
2 part line
3 part line
4 part line
5 part line
6 part line

12,971 lb / 75.6 ft/min
25,942 lb / 37.8 ft/min
38,913 lb / 25.2 ft/min
51,884 lb / 18.9 ft/min
64,855 lb / 15.1 ft/min
70,000 lb / 15.1 ft/min



Fully proportional
Independent outrigger controls



Rated capacity indicator

Understructure



Front: Out and down,
To outer edge of pad

25 ft 6 in

Rear: Out and down,
To outer edge of pad

17 ft 6 in

Optional Features

- Two-stage jib
- Rotation resistant rope
- Multi-part load blocks
- Main hoist with 2 speed motor
- Heavy duty wood flatbeds
- Extra heavy duty wood flatbeds
- Extra heavy duty steel flatbeds
- Radio remote controls
- One-man or two-man baskets
- Hoist drum tensioner
- Continuous rotation
- Oil cooler
- Single front bumper outrigger
- Hydraulic hose reel
- Tool box

Effective Date: February 2014. Product specifications and prices are subject to change without notice or obligation. The photographs and/or drawings in this document are for illustrative purposes only. Refer to the appropriate Operator's Manual for instructions on the proper use of this equipment. Failure to follow the appropriate Operator's Manual when using our equipment or to otherwise act irresponsibly may result in serious injury or death. The only warranty applicable to our equipment is the standard written warranty applicable to the particular product and sale and Terex makes no other warranty, express or implied. Products and services listed may be trademarks, service marks or trade-names of Terex Corporation and/or its subsidiaries in the USA and other countries. All rights are reserved. Terex® is a registered trademark of Terex Corporation in the USA and many other countries.

Copyright 2014 Terex Corporation.

Terex Cranes, Global Marketing, Dinglerstraße 24, 66482 Zweibrücken, Germany
Tel. +49 (0) 6332 830, Email: info.cranes@terex.com, www.terexcranes.com



www.terexcranes.com

Brochure Reference: TC-DS-I-E-BT70100-02/14



WORKS FOR YOU.™